

TROÏKA

From the Symphonic Suite "Lieutenant Kijé"

SERGE PROKOFIEFF

Op. 60

Arranged by DAVID LLOYD-JONES

Cello

Moderato $\text{♩} = 104$

pizz. f arco f pizz. f arco f pizz. f

① arco pizz. ff arco f Trbns. 1.2 f div. f Meno mosso unis.

② Allegro con brio $\text{♩} = 152$

f

③ 1

pizz. f pizz. arco

④

div. mf staccatissimo e con brio

mf staccatissimo e con brio

f

f

Cello

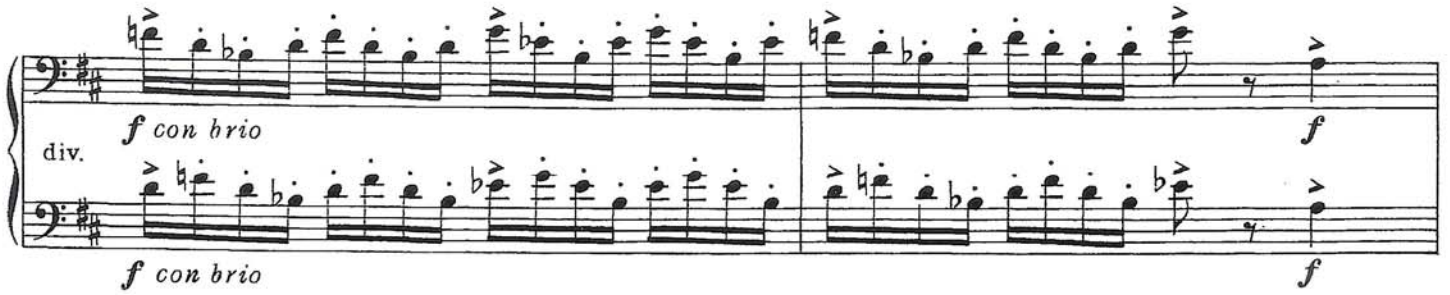
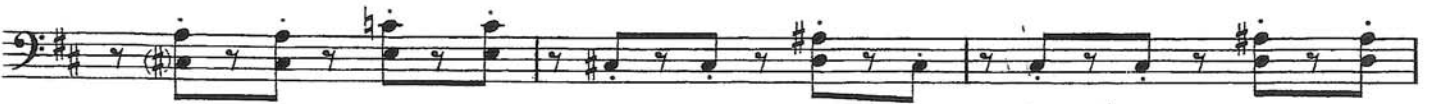
⑤



⑥



⑦



⑧



⑨



Cello

⑩

pizz. arco

div. *f* *f* *mf staccatissimo e con brio*

f *f* *mf staccatissimo e con brio*

⑪

non div. arco

p gettando l'arco

mp *mf*

div. *f con brio* *f*

f con brio *f*

⑫

rit. *f*

⑬ - en - u - to al Moderato, come prima ♩ = 104

pizz. arco pizz. arco

f *ff*